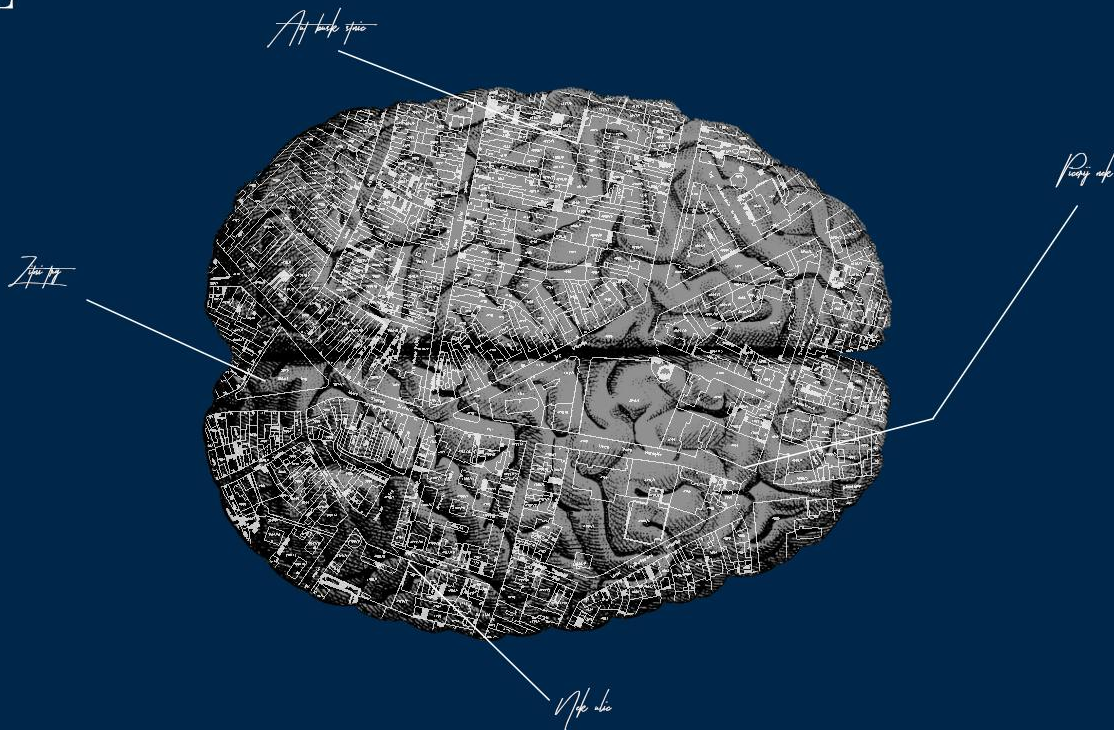


ON THE FOUNDATIONS
of the
ROMAN EMPIRE



1.
Obelisk
Teatar
-
1st
Obelisk
Theater

1.7. - 1.8.2018.







Crkva Svetog Stefana

Top Shop

Supermarket
Univerexport

Kafe Stari Grad

Fireworks Store
Mimovec Pirotehnik

Zanatlijska

Trg Nikole Pašića

Ethnic Restaurant
Draganov Gust

Parking Lot
Parkiralište Trg Nikole
Pašića - Zona II (Crvena)

Žitna pijaca

Žitni Trg

Čelik

Idea

Bakery
Libertas

MY HOME

Telenor banka

Parking Lot
Crvena Zona - Žitni Trg

FANATIC

Furniture Store
Viterog Promet

Bicycle Store
Capriccio sport center

Žitni trg

Trg Svetog
Stefana

Trg Svetog Stefana

Sava

Sava

Sava

Splav „Krug“

Sveti

Cafe & Nargila Bar
"HYPNOTIC"

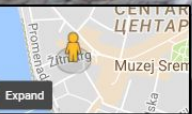
MC BACKO -
BACKOV ROSTILJ...

Agropapuk

Bife "KOD JUCE"

Google

Kafe restoran "Kod
Debelog Dabra"



Google



Measure distance

Click on the map to add to your path

Total area: 1,443.83 m² (15,541.22 ft²)

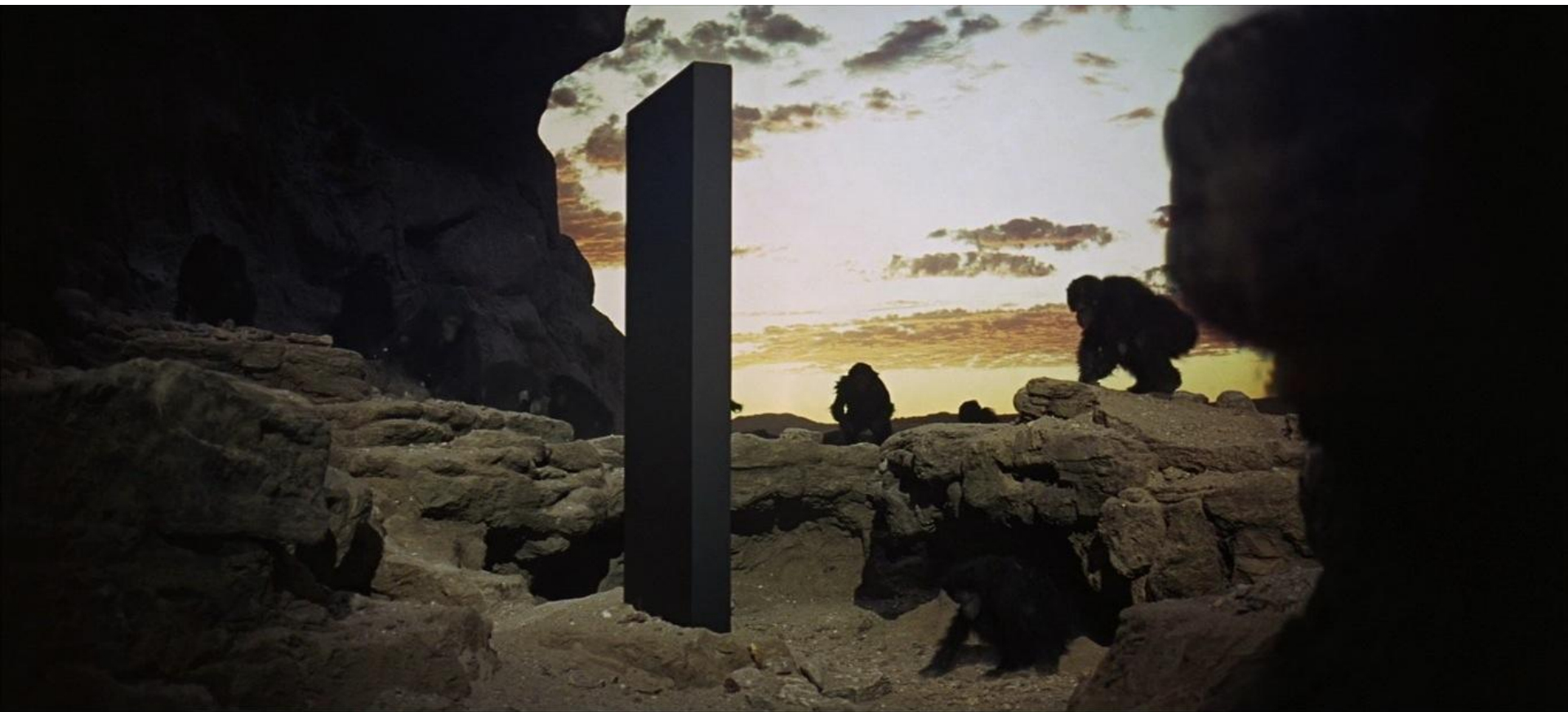
Total distance: 145.63 m (477.78 ft)





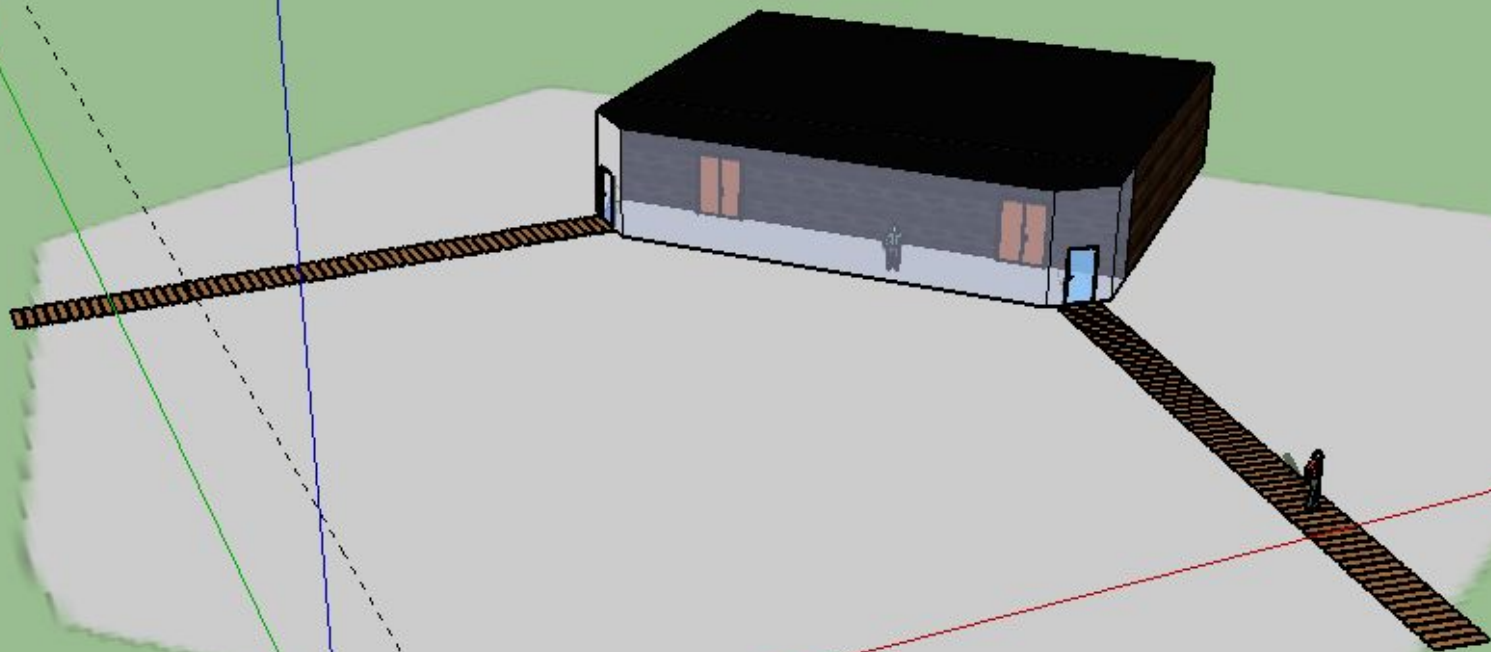


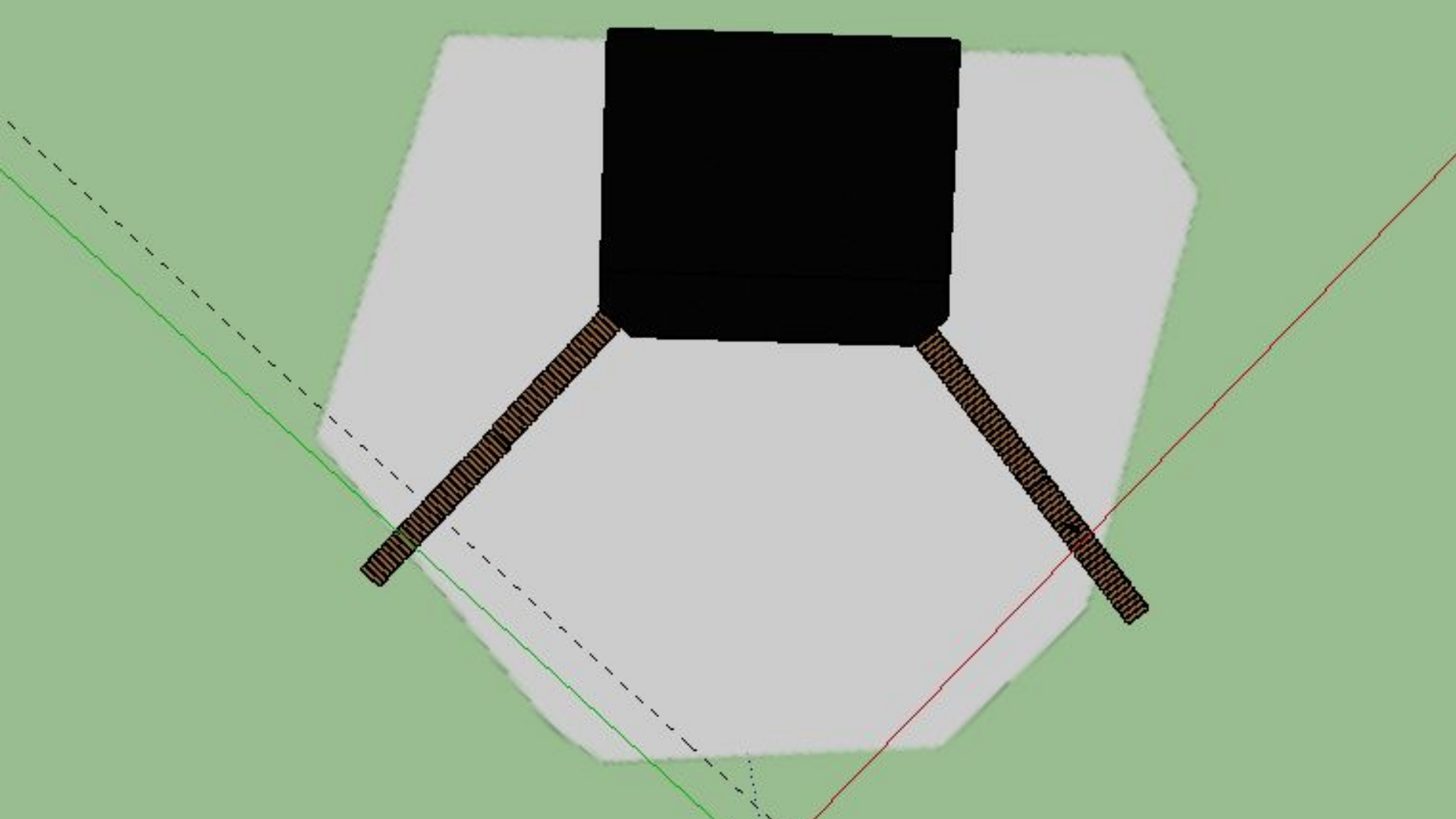




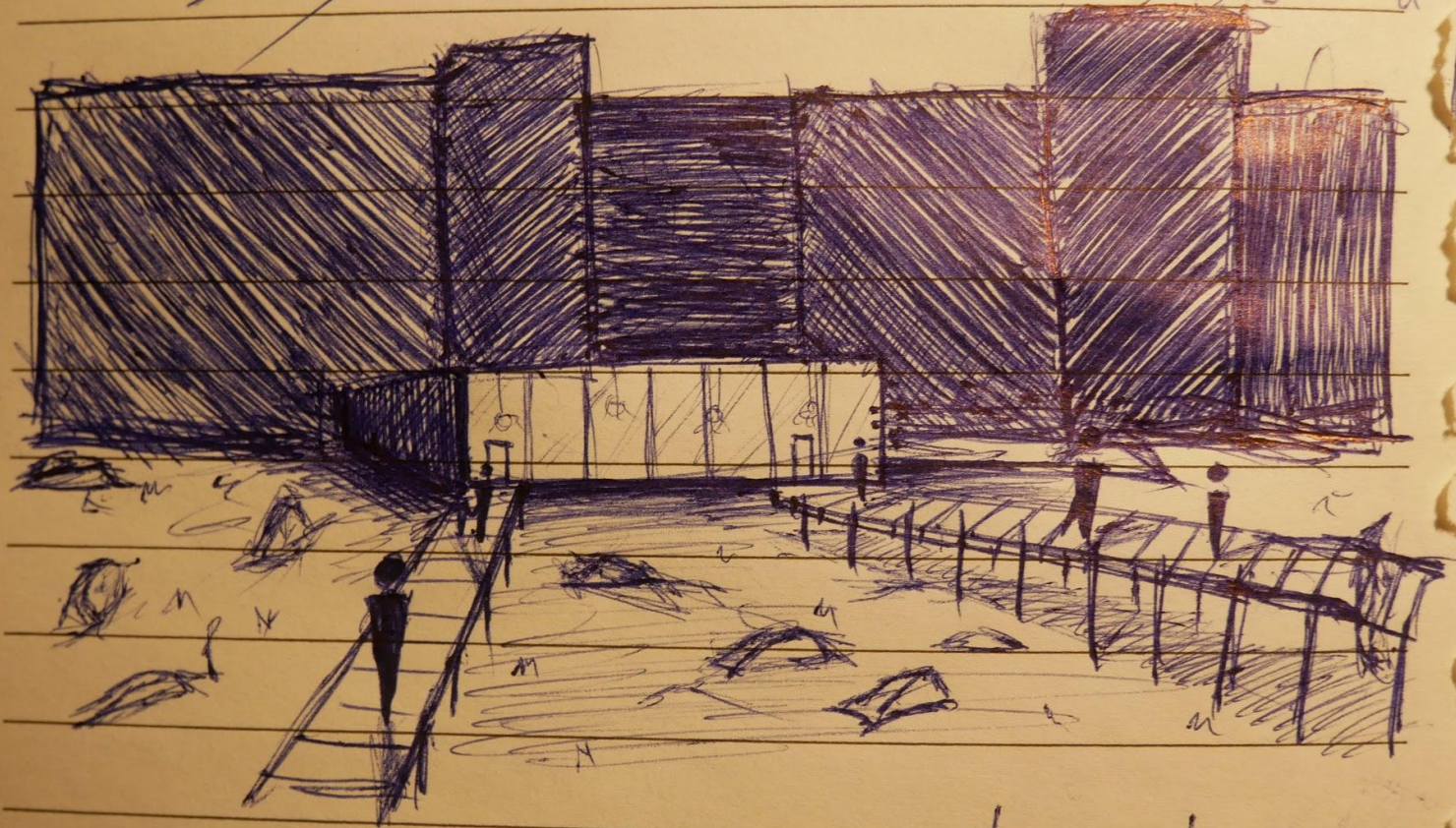








menyajikan data
antar sistem



- 10
Pod