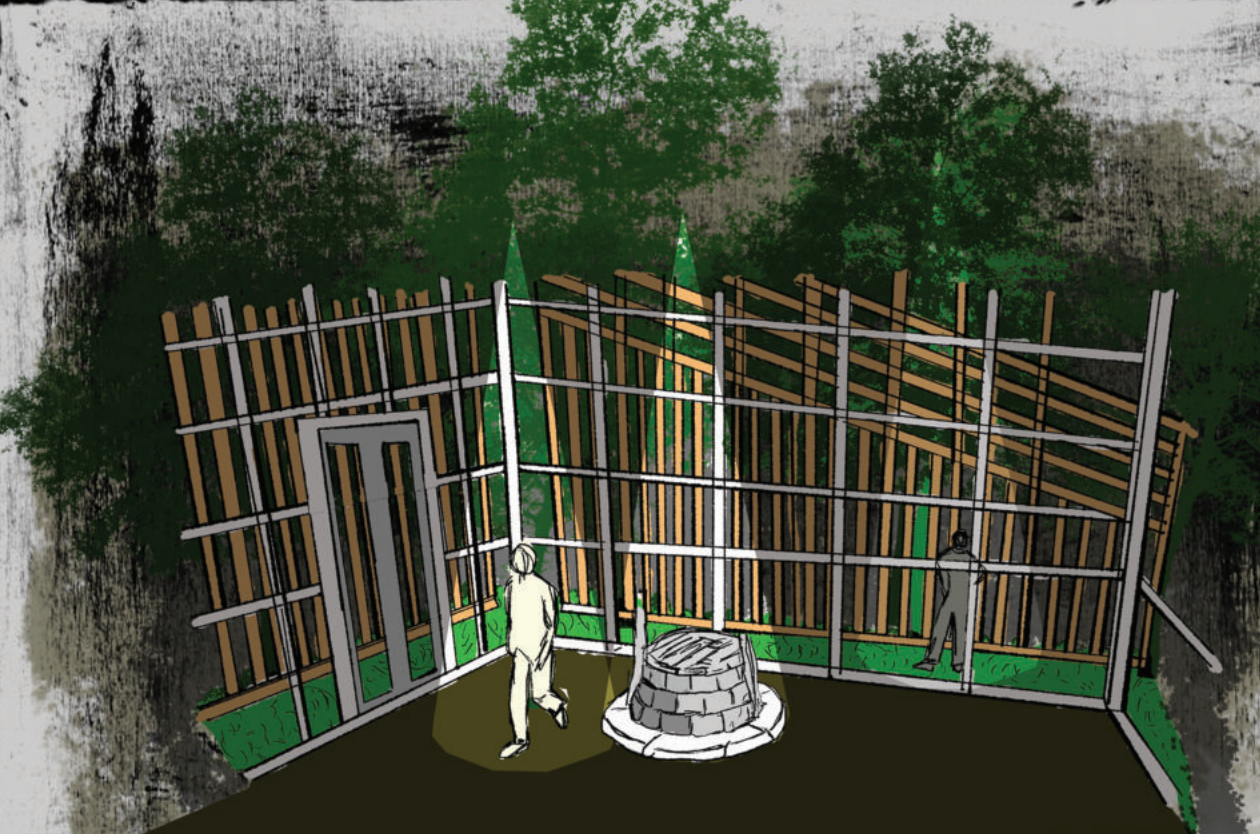
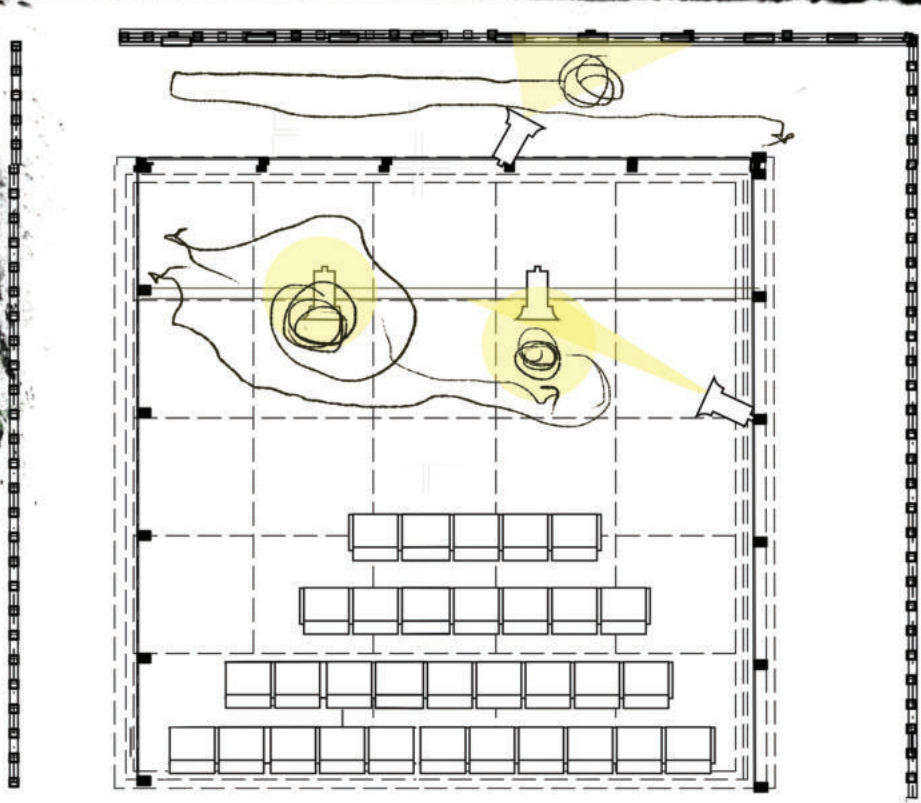


Prostorna instalacija
PUCAO SAM KAO U OGLEDALO



Scena 1.
Enver kao potencijalni ubica.
Likovi: Enver, Dzem i Mahmut.

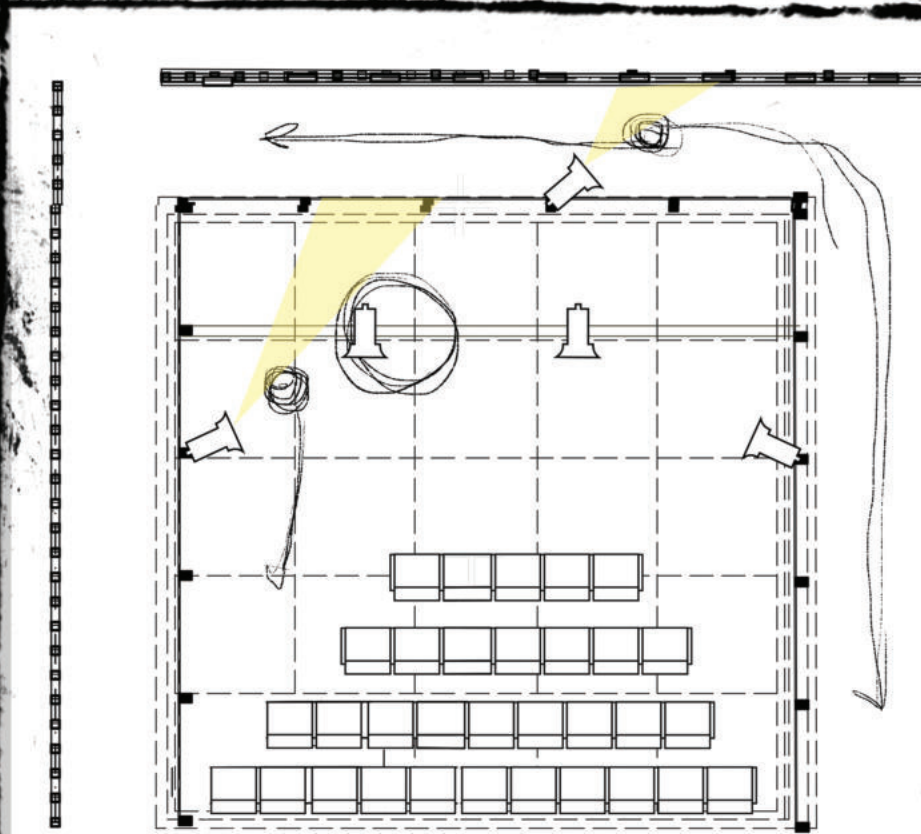


Scensko-gledališni prostor
Šema kretanja i rasvete

KONTAKT TEATAR



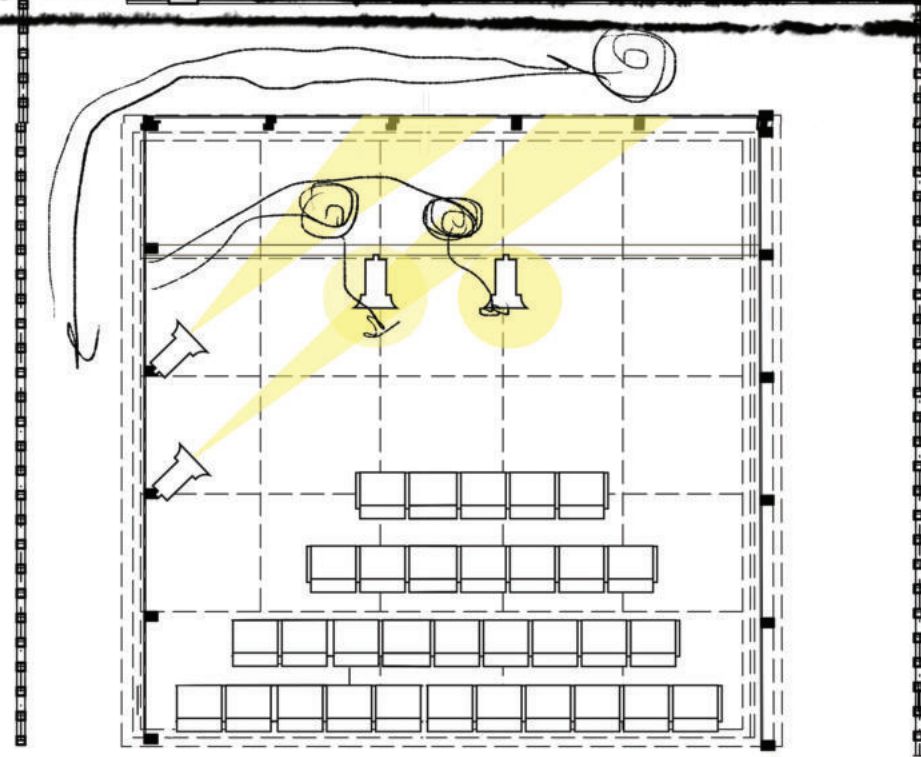
Scena 2.
Enverovo nastajanje.
Likovi: Enver, Dzem i Žena crvene kose.



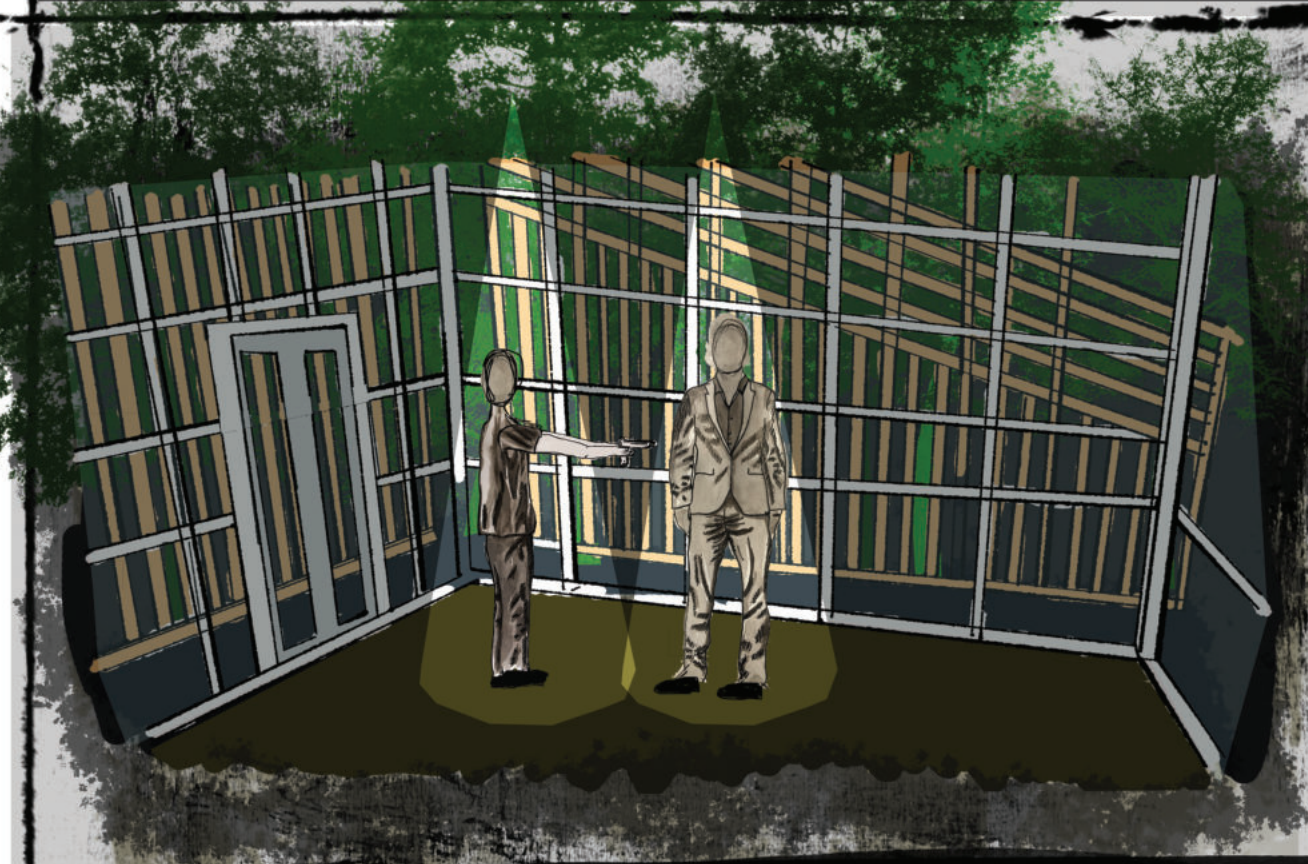
Scensko-gledališni prostor
Šema kretanja i rasvete



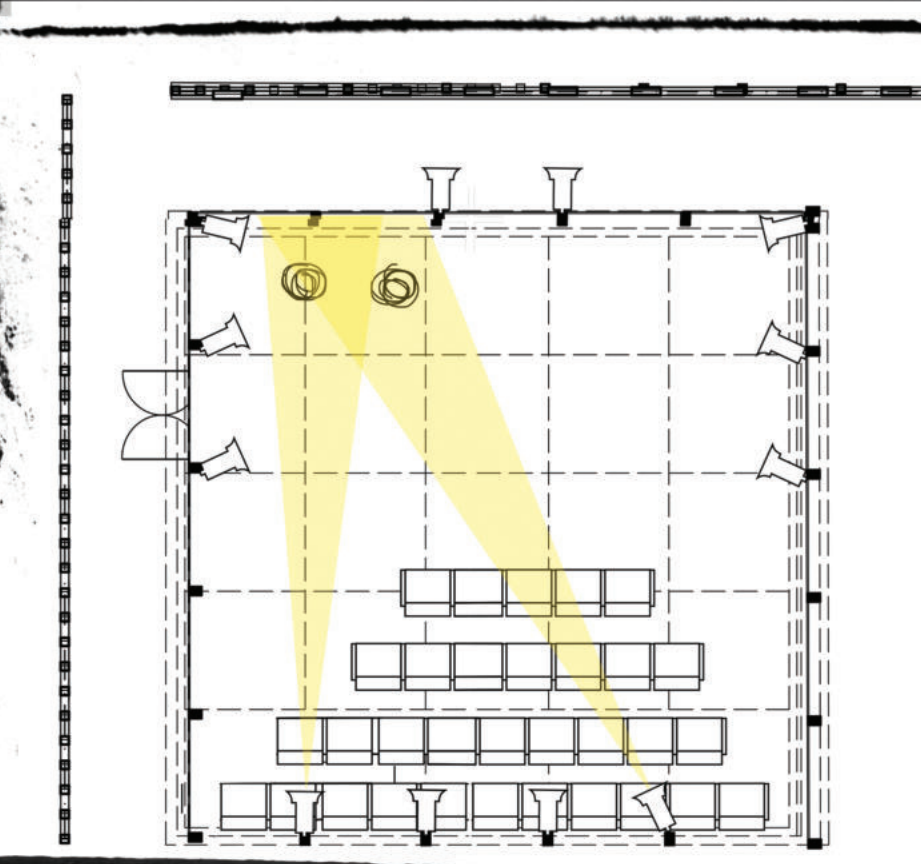
Scena 3.
Džem započinje novi život.
Likovi: Džem i Ajše.



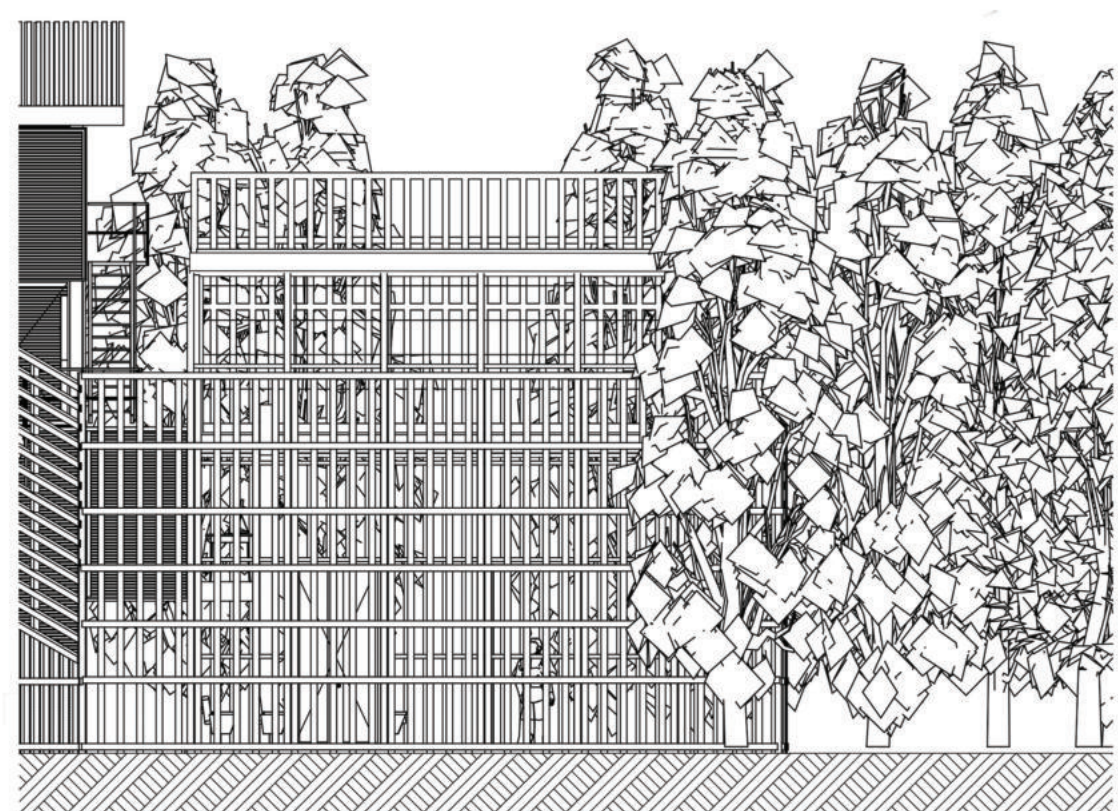
Scensko-gledališni prostor
Šema kretanja i rasvete



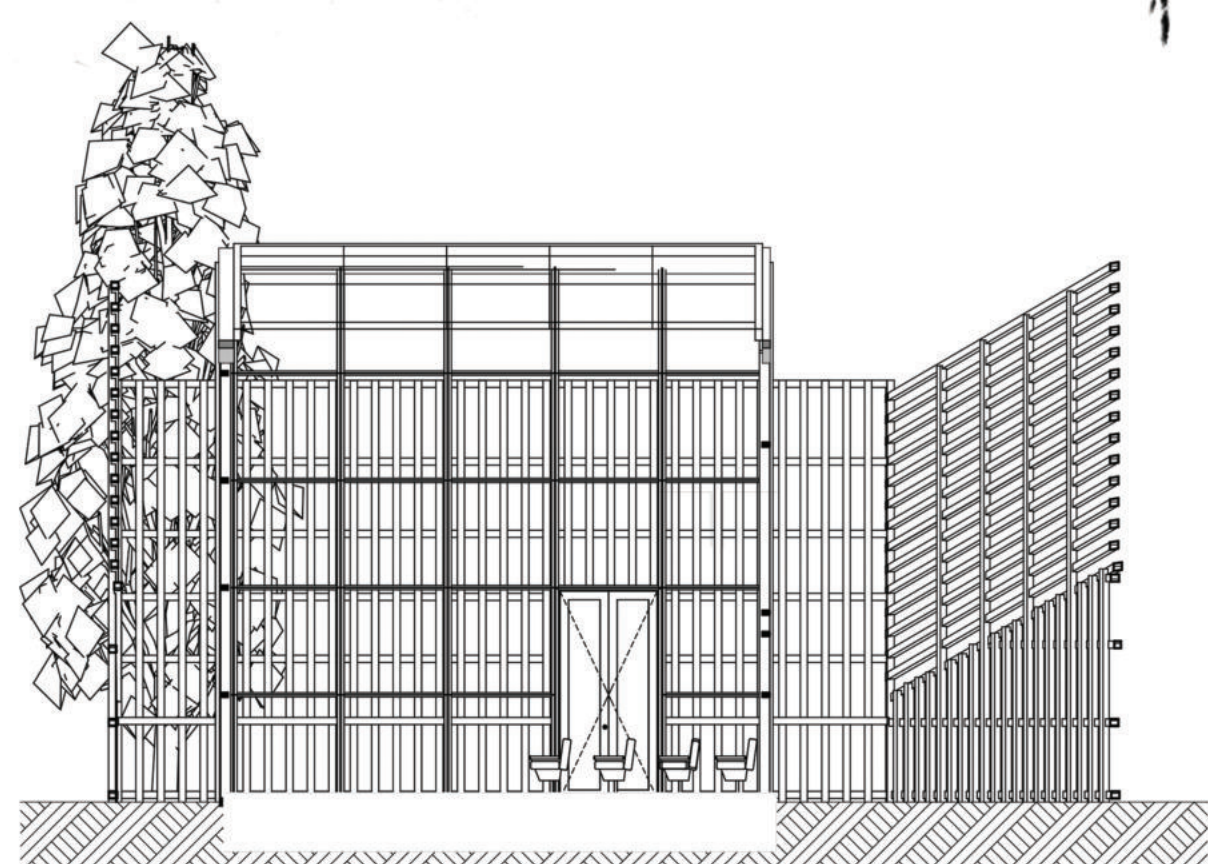
Scena 4.
Dzemovo ubistvo



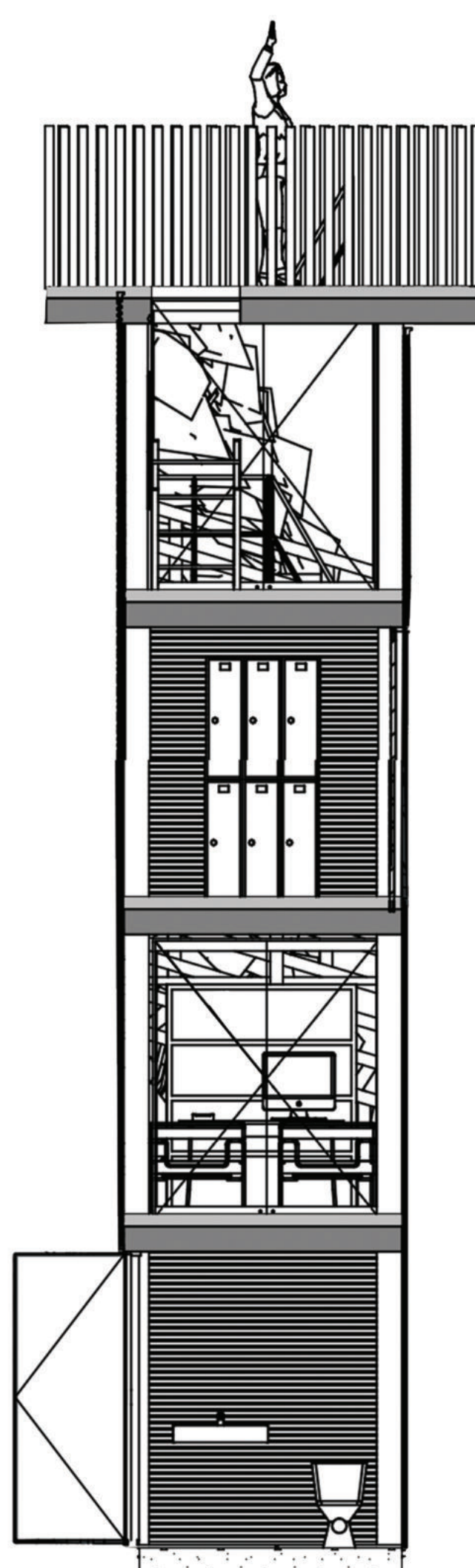
Scensko-gledališni prostor
Šema kretanja i rasvete



izgled istok



podužni presek

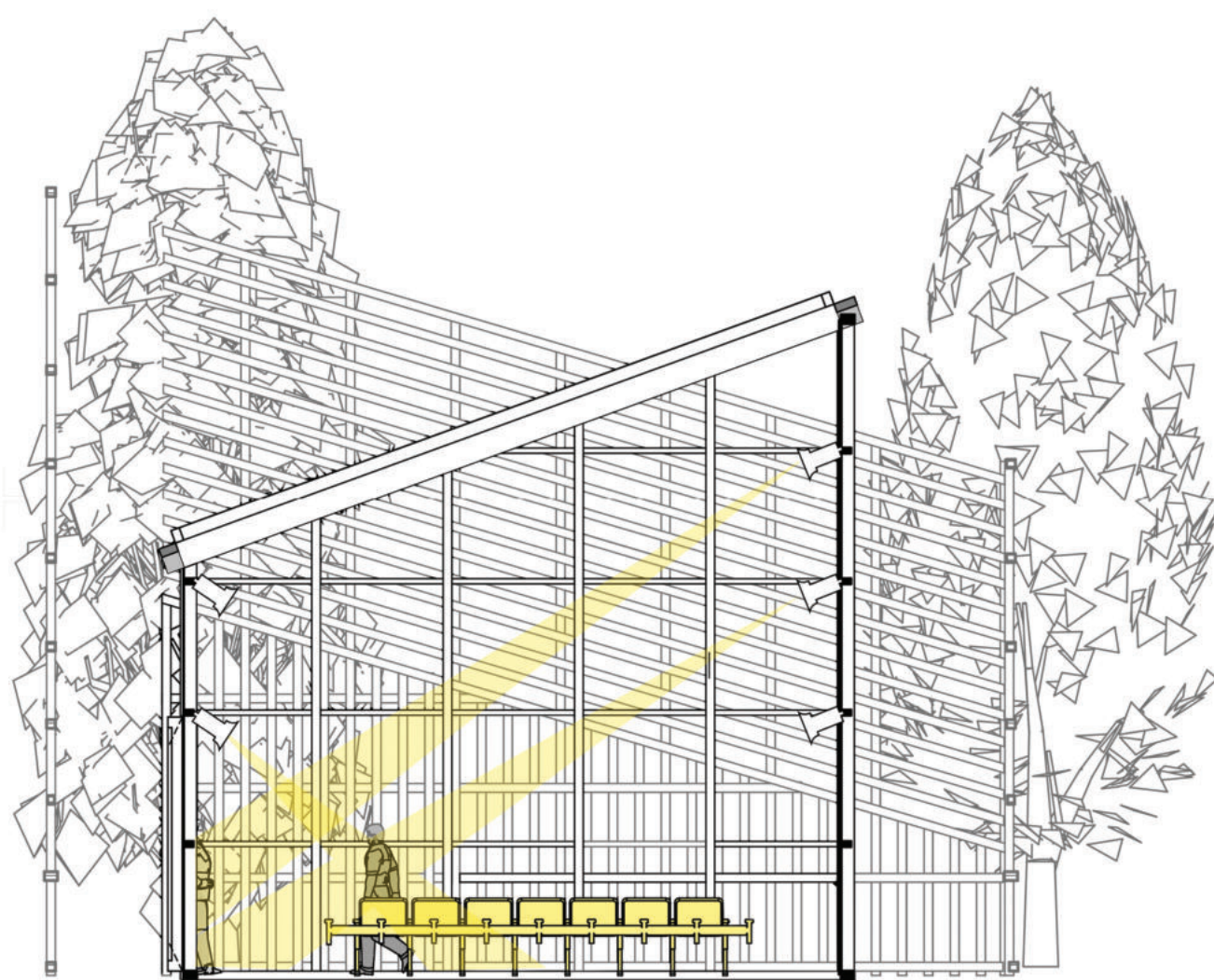


presek tornja

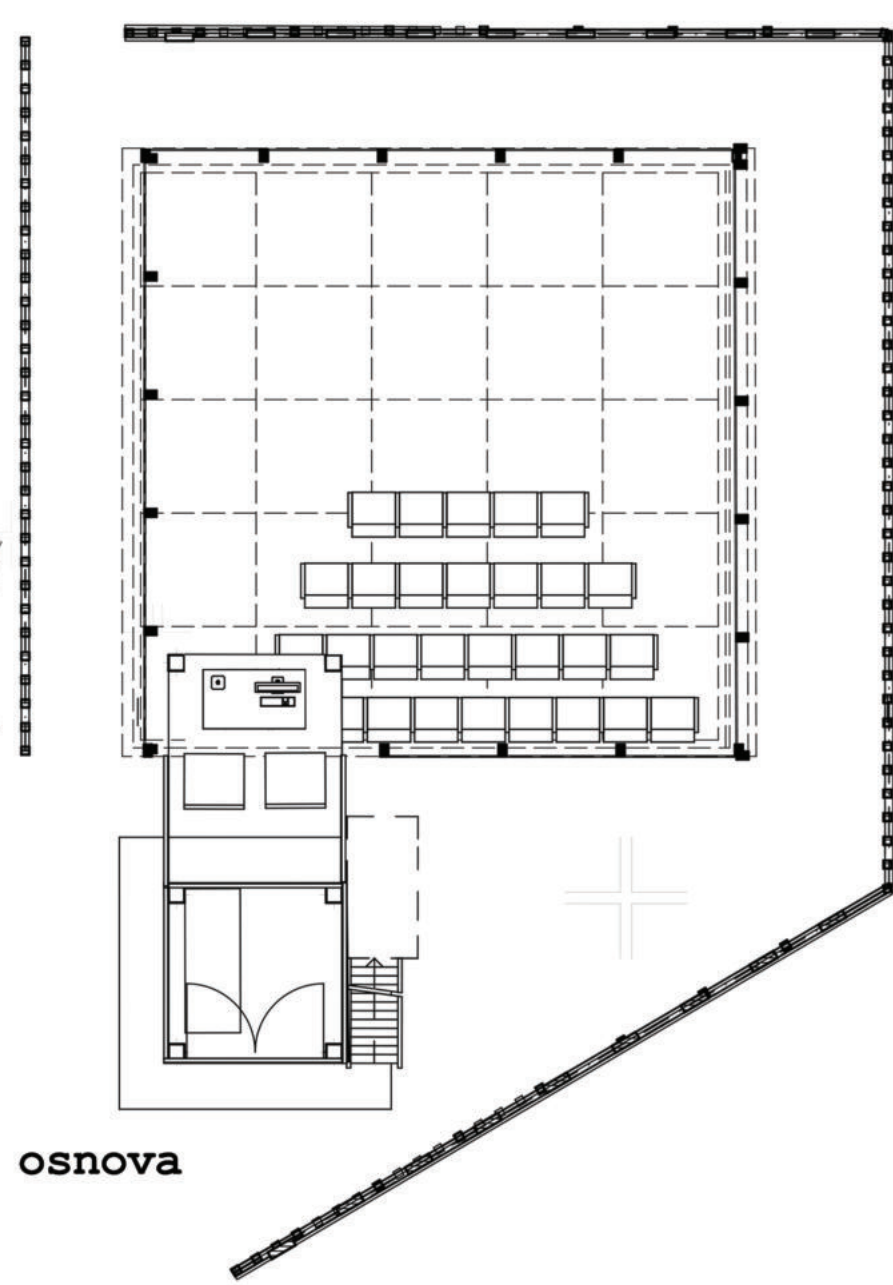
Asocijacije za realizaciju objekta:
rat, logori, zatvor, odnos prema gradu
,,Sremska Mitrovica'', istoriji, prostoru, stanovnicima..

Organizacija objekta po nivoima:

- Objekat: Scensko-gledališni prostor.
Kula:
1. Toalet
2. Prostorija koja spaja objekat i kulu, (režija)
3. Prostorija za zaposlene
4. Prilaz za vidikovac
5. Vidikovac



poprečni presek



osnova



osnove tornja

3D modeli

